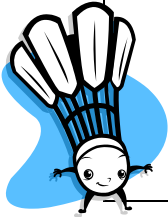
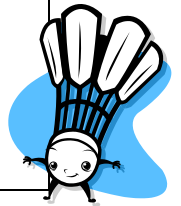


# INTERMEDIATE SCHOOLS COMPETITION 2017

**! FIND A PARTNER & MAKE A TEAM !**



Starting Thursday October 19th 2017  
B&M Centre, Pascal St.  
After school from 3.30pm -5.30pm



**Format:** The competition is a team event which will last for 8 weeks. Each team consists of two players (2 boys or 2 girls). Each tie consists of two singles and a doubles game. Each team plays two ties each day. This means everyone gets 4 games every Thursday

**Dates:** 19<sup>th</sup> October –7<sup>th</sup> December 2017

**Cost:** \$75+GST per team. Enter through your school and through the entry form on our website.

**First Night** - Grading will take place on the first night as the competition involves beginners to advanced players. This enables us to place teams with similar abilities in the same divisions.

For further information – contact Callum Hill  
Manawatu Badminton Events Co-ordinator on 022 0770812  
[events@manawatubadminton.org.nz](mailto:events@manawatubadminton.org.nz)

[www.manawatubadminton.org.nz](http://www.manawatubadminton.org.nz)

